



# Atlas Helmet Range

Combining Technology With Design

Blatchford 

# Atlas Helmet Range



**Great British Design and Quality -**  
Designed and manufactured in the UK.

## Introduction

The innovative Atlas Helmet Range has been developed by Blatchford in response to a clinical survey, fulfilling your requests for:

- improved design options
- extended colour choices, including natural hair shades
- a discreet helmet to enable concealment under a 'beanie' style of hat
- removable strap arrangement
- accurate CAD CAM reproduction of anatomical measures
- adjustability to accommodate swelling
- wipe clean materials
- the protection and appearance of cycling or winter sports helmets

## Help

Subsequently, 15 years of manufacturing experience have been distilled by the Blatchford team in Sheffield to create the Atlas Helmet Range. Bringing together the latest developments in materials, robotics and patient specific data capturing, CAD-CAM technology moulds the helmets to a PU foam model. The result is a truly bespoke and optimised orthosis perfectly matched to the patient's shape that ensures the best anatomical fit, comfort and function with enhanced cosmetic appearance.

Our technical team are happy to discuss the best option for your requirements.

# Helmet Selection

The Range at a Glance

Tough full cranial protection?

Choose

Atlas Hard



Subtle full cranial protection?

Choose

Atlas Slimline



Basic cranial protection?

Choose

Atlas Scrum



Full cranial protection?

Choose

Atlas Full



Changing cranial size?

Choose

Atlas Adjustable



## Atlas Hard Helmet

### Description

The Co-polymer cover offers more protection than EVA and therefore the base layer is thinner for less bulk. It can be ordered with as many small ventilation holes as you require.

### Features

- 12mm Plastazote base (only base layer sent to fit stage)
- Base layer available in white or black
- Top cover of 4.5mm Co-polymer pulled polymer (white, black, flesh, red, royal blue, light blue, yellow or the full range of transfers are available)
- 8 ventilation holes as standard but more can be specified
- Removable soft chin guard as standard
- Removable internal soft pads as standard
- Webbing straps (15mm or 20mm widths)
- Straps can be made removable by specifying press studs instead of rivets
- Fastex clips, Hook and Loop return pull or adjustable buckle fastenings available
- Small check hole at top for fit stage
- Anterior/posterior/temporal extensions and bumpers available



## Atlas Slimline Helmet

### Description

The Atlas Slimline is the most discreet solution we offer. A simple Co-polymer shell, which can be worn underneath a baseball cap or a woolly hat. It can be lined if necessary and ordered with as many small ventilation holes as required.

### Features

- Optional 3mm or 6mm Plastazote base
- Top cover of 4.5mm Co-polymer (white, black, flesh, red, royal blue, light blue, yellow or the full range of transfers are available)
- If no base layer is required the Co-polymer shell will be manufactured with internal pads
- 8 ventilation holes as standard but more can be specified
- Removable soft chin guard as standard
- Removable internal soft pads as standard
- Webbing straps (15mm or 20mm widths)
- Straps can be made removable by specifying press studs instead of rivets
- Fastex clips, Hook and Loop return pull or adjustable buckle fastenings available
- Small check hole at top for fit stage
- Additional Velcoins can be ordered to stick on outside of helmet to attach patient's own hat to protective shell



# Atlas Scrum Helmet

## Description

The Atlas Scrum offers a more cosmetic alternative to the conventional cruciform style scrum helmet. It protects the main areas of the cranium whilst still providing large areas of ventilation.

## Features

- 28mm Plastazote base (only 12mm layer sent to fit stage)
- Base layer available in white or black
- Top cover of EVA (white, red, blue, lilac, yellow, green, orange, purple, pink, grey, black, brown, blonde)
- 4 large circular ventilation holes
- Removable soft chin guard as standard
- Removable internal soft pads as standard
- Webbing straps (15mm or 20mm widths)
- Fastex clips, Hook and Loop return pull or adjustable buckle fastenings available
- Small check hole at top for fit stage
- Anterior/posterior/temporal extensions and bumpers available



# Atlas Adjustable Helmet

## Description

The Atlas Adjustable helmet accommodates fluctuating oedema following surgery or trauma. It incorporates a number of removable pads, which can be adjusted to fit shape and volume change.

## Features

- 28mm Plastazote base (only 12mm layer sent to fit stage)
- Base layer available in white or black
- Top cover of EVA (white, red, blue, lilac, yellow, green, orange, purple, pink, grey, black, brown, blonde)
- A number of 25mm ventilation holes can be added
- Removable soft chin guard as standard
- Removable internal soft pads, held in by Hook and Loop, which can be attached on top of each other to alter the fit
- Webbing straps (15mm or 20mm widths)
- Chin section of strap can be made removable by specifying press studs
- Fastex clips, Hook and Loop return pull or adjustable buckle fastenings available
- Small check hole at top for fit stage
- Anterior/posterior/temporal extensions and bumpers available



# Atlas Full Helmet

## Description

The Atlas Full protects all areas of the cranium. It can be ordered with a number of small ventilation holes as required.

## Features

- 28mm Plastazote base (only 12mm layer sent to fit stage)
- Base layer available in white or black
- Top cover of EVA (white, red, blue, lilac, yellow, green, orange, purple, pink, grey, black, brown, blonde)
- A number of 25mm ventilation holes can be added
- Removable soft chin guard as standard
- Removable internal soft pads as standard
- Webbing straps (15mm or 20mm widths)
- Fastex clips, Hook and Loop return pull or adjustable buckle fastenings available
- Small check hole at top for fit stage
- Anterior/posterior/temporal extensions and bumpers available



# Transfer Options

## Space



Rockets



Stars



Outer Space

## Animals and Insects



Beautifully



Owls Pink



Dolphin Sea



Ladybird Flowers



Safari Orange



Unicorns



Animals Library



Cheetah Print



Dinosaur Blue Green



Leopard Jungle



Ocean Scene

## Special FX



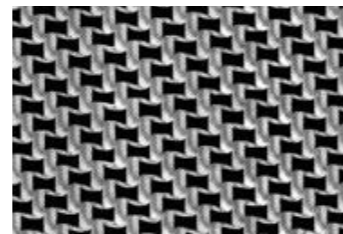
Building Blocks



Camouflage Military



Camouflage Pink



Carbon Fibre



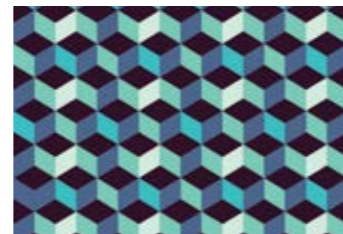
Flames Blue



Swirl Multi



Denim Blue



3D Multicolour

## Sports



Football Blue



Football Red

## Assorted



Music Time



Princess



Skulls Black



Pixels



Donuts

## Superheroes



Flying Hero Yellow



Superheroes Collection



Superheroines Women



Shield



The Masked Hero



Spidey

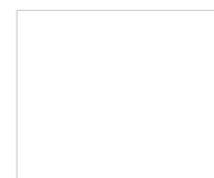


Eyes Denim



Panther

## EVA Colour Options



White



Orange



Red



Pink



Black



Brown



Blue



Purple



Lilac



Grey



Blond

# Helmet Measurements

# Notes

### Patient Information

Patient Name \_\_\_\_\_  
 Age \_\_\_\_\_ Sex \_\_\_\_\_  
 Diagnosis \_\_\_\_\_

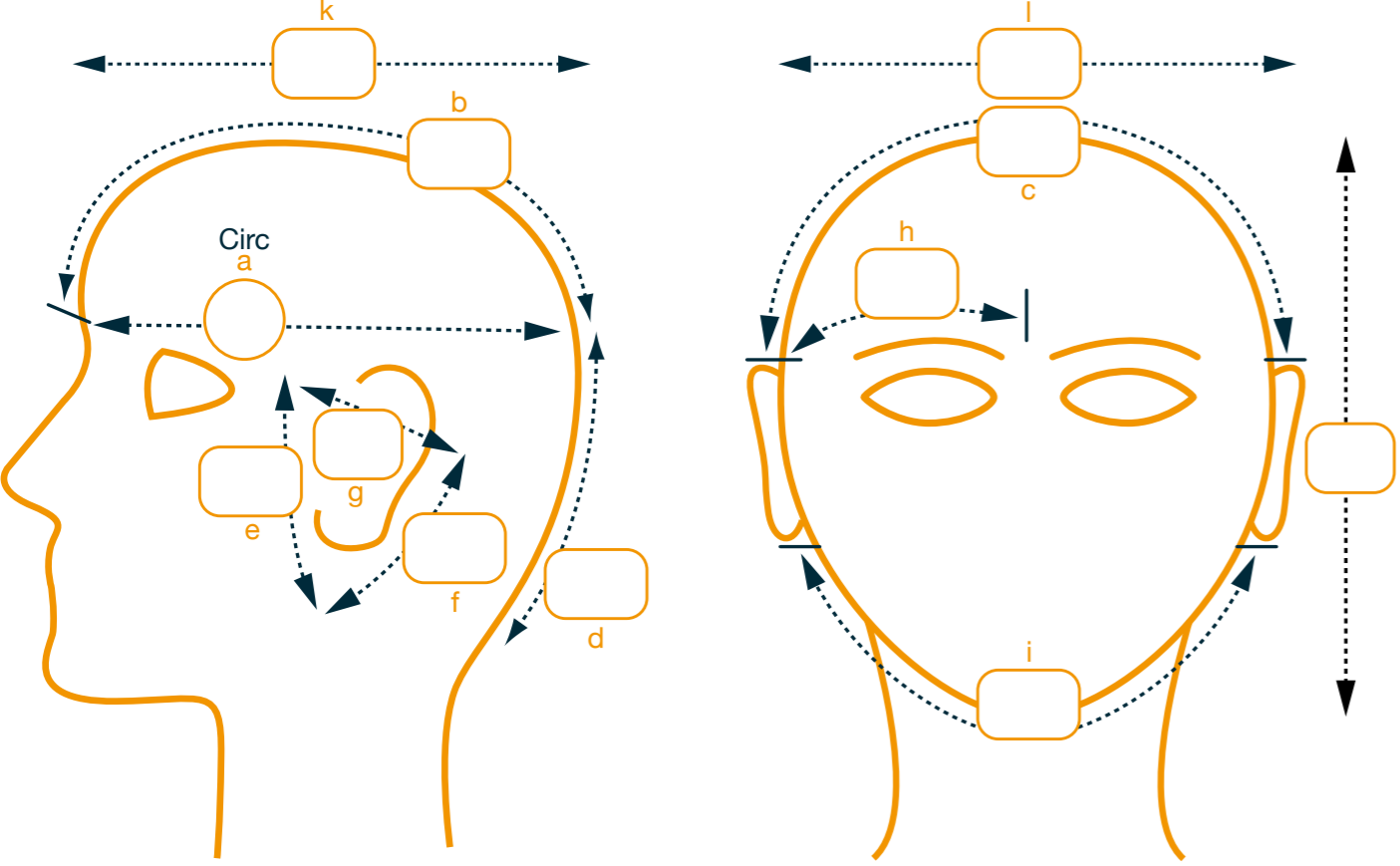
### Order Information

Order No. \_\_\_\_\_ Clinic \_\_\_\_\_  
 Orthotist \_\_\_\_\_ Fitting?  Yes  No  
 Date \_\_\_\_\_ Current User?  Yes  No

### Helmet Options

- Atlas Range:**  Scrum  Full  Adjustable  Hard  Slimline
- Base Material:**  Plastazote  Co-polymer  Other \_\_\_\_\_ Base Colour:  Black  White
- Covering:**  EVA  Co-polymer
- Colour:**  EVA \_\_\_\_\_  
 Co-polymer \_\_\_\_\_ **Transfer:** \_\_\_\_\_
- Strap Width:**  15mm  20mm **Strap Attachment:**  Rivet  Press Stud
- Fastening:**  Fastex Clip  Hook & Loop R/pull  Buckle **Fastening Location:**  Middle  Left  Right
- Extras:**  Bumper  Anterior  Posterior  
 Extension  Posterior  Temporal  
 Circular Ventilation Holes No.

### Measurements



Blatchford

+44 (0) 114 2637900 | [orthotics@blatchford.co.uk](mailto:orthotics@blatchford.co.uk) | [blatchfordmobility.com](http://blatchfordmobility.com) | [@blatchfordgrp](https://www.instagram.com/blatchfordgrp)